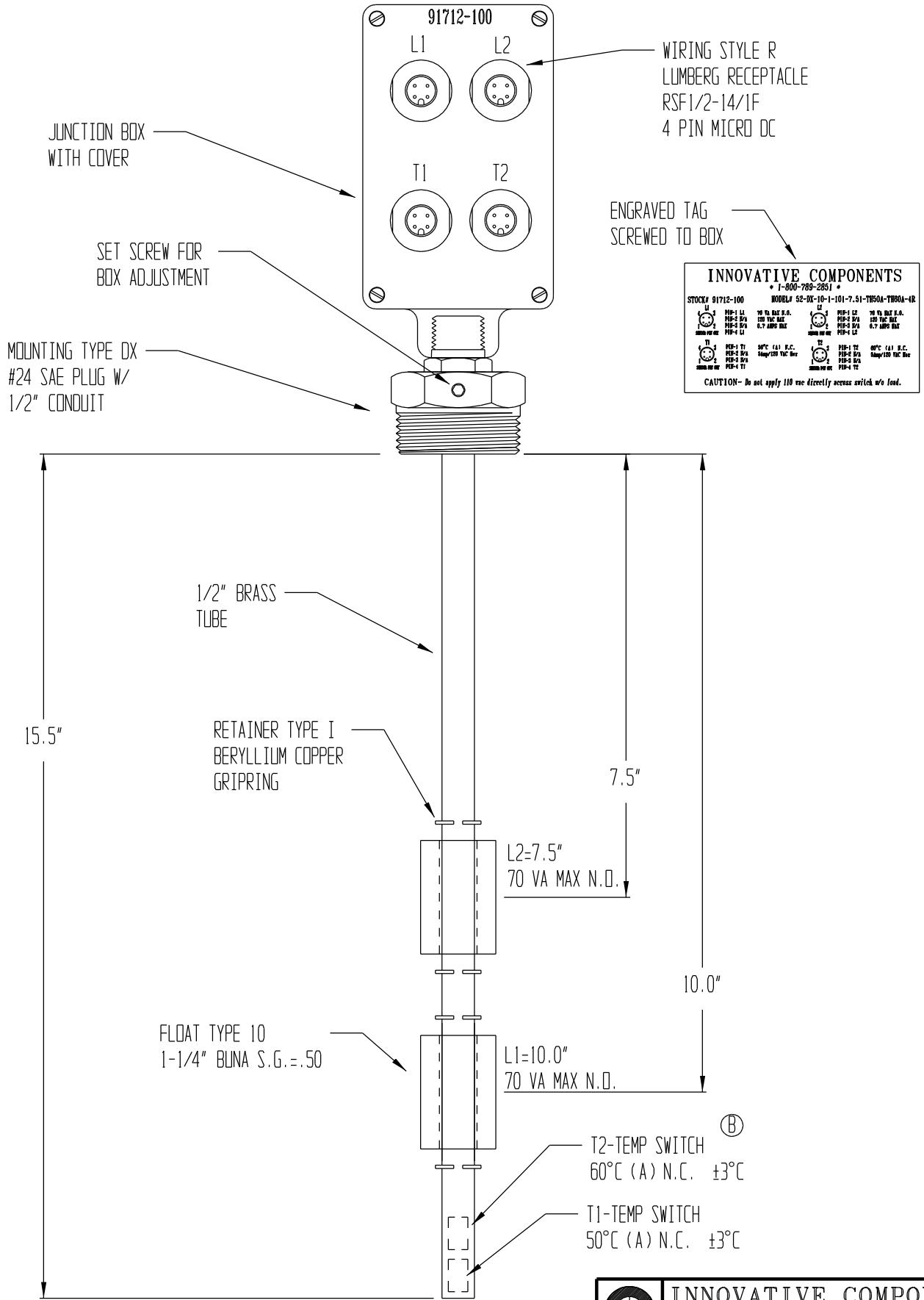


SERIES 5000 BRASS/BUNA-N



INNOVATIVE COMPONENTS
 * I-800-789-2851 *

STOCK # 91712-100	MODEL # 62-DX-10-1-101-7.51-TH50A-TH60A-4R
L1 PIP-1 LA 70 VA MAX N.O. PIP-2 BA 120 VAC REC PIP-3 BA 0.7 AMP REC PIP-4 LA	L2 PIP-1 LA 70 VA MAX N.O. PIP-2 BA 120 VAC REC PIP-3 BA 0.7 AMP REC PIP-4 LA
T1 PIP-1 TA 50°C (A) N.C. PIP-2 BA 50 VAC REC PIP-3 BA PIP-4 TA	T2 PIP-1 TA 60°C (A) N.C. PIP-2 BA 50 VAC REC PIP-3 BA PIP-4 TA

CAUTION- Do not apply 110 vcc directly across switch w/o load.

SIGNATURE OF APPROVAL _____ DATE _____
 PRINT: _____
 SIGN: _____

THIS DRAWING IS THE SOLE PROPERTY OF INNOVATIVE COMPONENTS ANY REPRODUCTION OF THIS DRAWING WITHOUT EXPLICIT PERMISSION OF INNOVATIVE COMPONENTS IS STRICTLY PROHIBITED

INNOVATIVE COMPONENTS
 384 OLD TURNPIKE ROAD, P.O. BOX 294
 SOUTHLINGTON, CT. 06489

TITLE: BRASS & BUNA MULTILEVEL	
MODEL: 52-DX-10-1-101-7.51-TH50A-TH60A-4R	DRAWN BY: F.J.K
STOCK: 91712-100	DATE: 4/29/96
FILENAME: C:\CK7\prt\22CC1012\91712-10	SCALE: NONE
REV:	