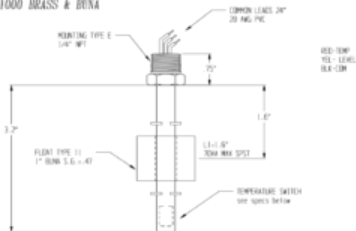


SERIES 1000 BRASS & BUNA



RED-TEMP
YEL-LEVEL
BLK-DM

MATERIAL:

STEM: BRASS
 RETAINER: BERYLLIUM COPPER
 FLOAT: BUNA-N
 NON SP GR: 0.47
 OPERATING TEMP: 180°F WATER (-40 TO 230°F OIL)
 MAX PRESSURE: 150 PSI

LEAD WIRE: 20 AWG PWC 24" COMMON WIRE
 SWITCH OPERATION: N.O. OR N.C.

WIRE SWITCH

20 WV SPST N.O. RLS-52-110-wx IN.C. or N.O. J
 20 WV SPST N.C. RLS-52-112-wx IN.C. or N.O. J

PART#

TEMPERATURE SWITCH SPECS.

5°C INCREMENTS FROM 30° C to 150° C
 Accuracy: ±5°C
 Contact Ratings:
 2.0 amps @28vac/2 amps @ 28VDC

PLEASE NOTE:

THIS DRAWING AND SPECIFICATION IS THE PROPERTY OF INNOVATIVE COMPONENTS AND IS TO BE USED ONLY AS A TECHNICAL REFERENCE BY INNOVATIVE COMPONENTS CUSTOMERS. ANY REPRODUCTION OR DISTRIBUTION TO THE COMPANY IS PROHIBITED.

DATE OF APPROVAL: _____ DATE:

PREP: _____

CHK: _____



INNOVATIVE COMPONENTS

300 GLO SUNSHED AVENUE P.O. BOX 204
 SOUTHBRIDGE, CT 06090

QUANTITY ORDER NO. DATE ORDER NO.	TITLE: BRASS & BUNA TEMP/LEVEL		REV: 1.0 DATE: 11/10/00
	PART: Y-52-110-XX QUANTITY:	ORDER: Y-52-110-XX QUANTITY:	PRICE: \$1.50/EA TOTAL: