

ABS PLASTIC ENCLOSURE
NEMA4X, IP66, WITH STAINLESS
STEEL WALL MOUNTING
BRACKETS & HARDWARE

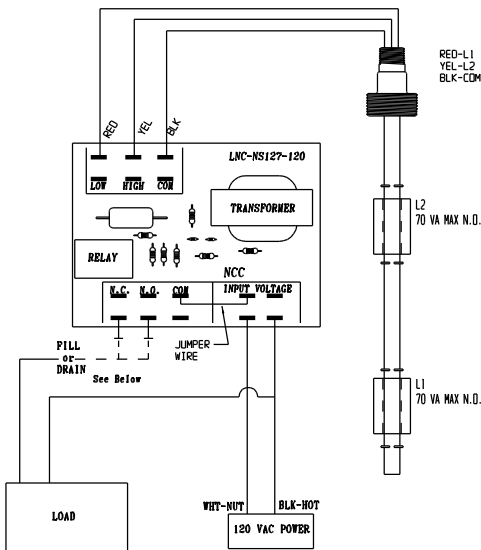
RED-L1
YEL-L2
BLK-COM

LIQUID TIGHT
CORDGRIP

ENTRY FOR FLOAT
SWITCH WIRES

MOUNTING TYPE A
1/2" NPT STAINLESS

WIRING STYLE C
COMMON LEADS
22AWG TEFLON; 24" STD



DRAIN WIRE TO N.O. CONTACT ON CIRCUIT BOARD:
PUMP ON HIGH LEVEL, DRAIN TANK

FILL WIRE TO N.C. CONTACT ON CIRCUIT BOARD:
PUMP ON LOW LEVEL, FILL TANK

UP TO
6FT

RETAINER TYPE II
S.S. SET COLLAR

FLOAT TYPE 03
2" S.S. S.G.=.64

L2=TBD"
70 VA MAX N.O.

L1=TBD
70 VA MAX N.O.

PLEASE NOTE:

THIS DRAWING AND SPECIFICATION IS THE PROPERTY
OF INNOVATIVE COMPONENTS AND IS TO BE USED
SOLEY AS A TECHNICAL REFERENCE BY INNOVATIVE
COMPONENTS' CUSTOMERS. ANY REPRODUCTION OR
DISTRIBUTION TO THE CONTRARY IS PROHIBITED.



INNOVATIVE COMPONENTS

635 OLD TURNPIKE ROAD
PLANTSVILLE, CT. 06479

STANDARD TOLERANCES .000 = ± .010 .050 = ± .050 .100 = ± .100 .200 = ± .200 ANGLES ± 5° TEMP ± 5°C	TITLE: DUAL LEVEL CONTROL RELAY PACKAGE	DRAWN BY: F.J.K DATE: 02/15/18 SHEET: 1 OF 1 SCALE: NONE
MODEL: R-DLC-120 & MLS	STOCK: PKG-RDLC120-ML	FILENAME: C:\CK7\PR\
PRINT: _____	SIGN: _____	REV: _____

SIGNATURE OF APPROVAL DATE

PRINT: _____

SIGN: _____