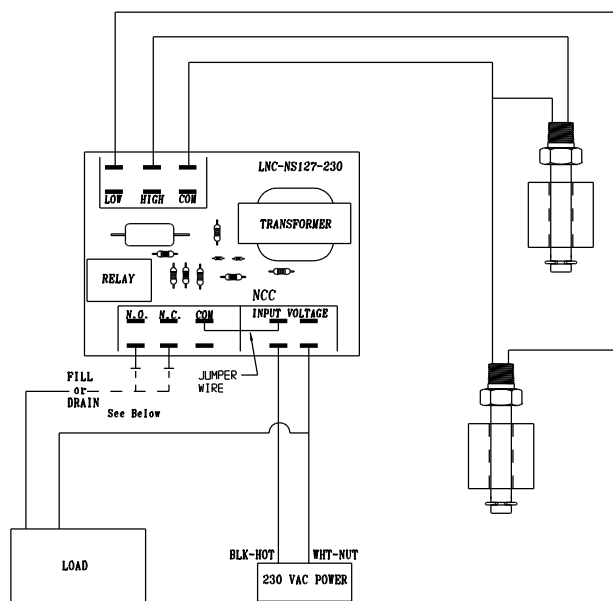
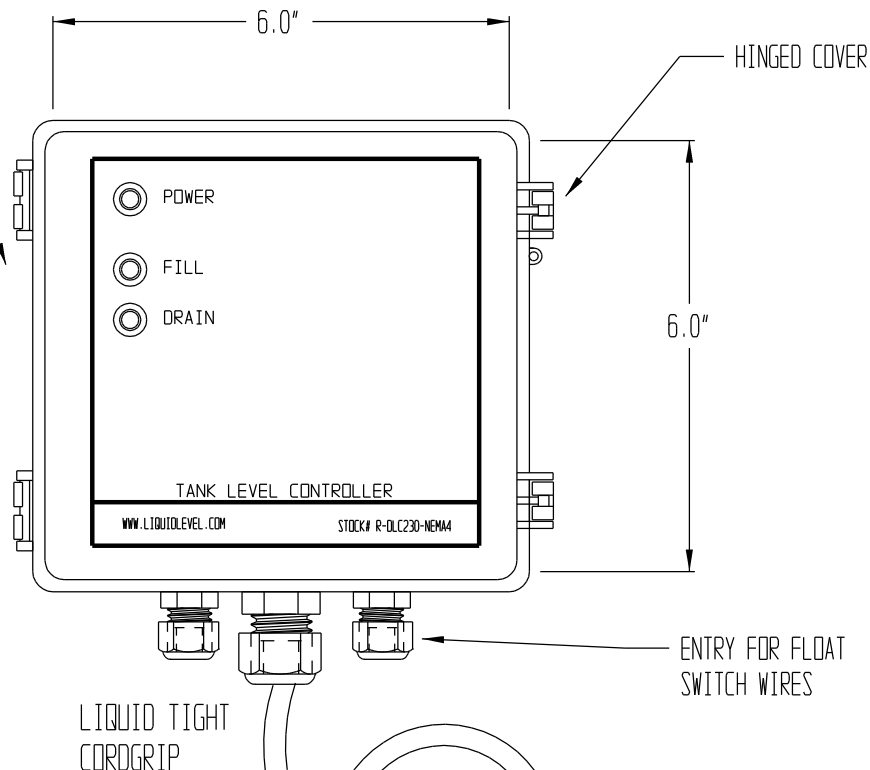
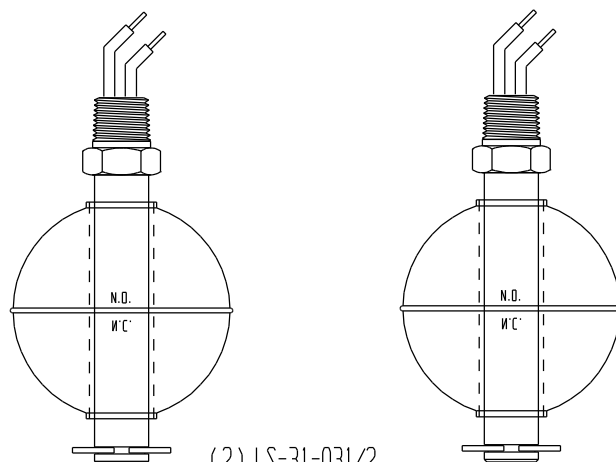


ABS PLASTIC ENCLOSURE
NEMA4X, IP66, WITH STAINLESS
STEEL WALL MOUNTING
BRACKETS & HARDWARE



DRAIN WIRE TO N.O. CONTACT ON CIRCUIT BOARD:
PUMP ON HIGH LEVEL, DRAIN TANK

FILL WIRE TO N.C. CONTACT ON CIRCUIT BOARD:
PUMP ON LOW LEVEL, FILL TANK

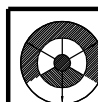


(2) LS-31-031/2
STANDARD SINGLE LEVEL
FLOAT SWITCHES

PLEASE NOTE:

THIS DRAWING AND SPECIFICATION IS THE PROPERTY
OF INNOVATIVE COMPONENTS AND IS TO BE USED
SOLEY AS A TECHNICAL REFERENCE BY INNOVATIVE
COMPONENTS' CUSTOMERS. ANY REPRODUCTION OR
DISTRIBUTION TO THE CONTRARY IS PROHIBITED.

SIGNATURE OF APPROVAL	DATE
PRINT:	
SIGN:	



INNOVATIVE COMPONENTS

635 OLD TURNPIKE ROAD
PLANTSVILLE, CT. 06479

TITLE: **DUAL LEVEL CONTROL RELAY PACKAGE**

MODEL: **R-DLC-230 & LS-31**

DRAWN BY: F.J.K

DATE: 02/15/18

STOCK: **PKG-RDLC230-LS**

SHEET: 1 OF 1

SCALE: NONE

FILENAME: C:\CK7\PRJ\J-BOX

REV:

STANDARD
TOLERANCES
.000 = ± .010
.00 = ± .050
.0 = ± .100
0 = ± .200
ANGLES ± 5°
TEMP 45°C