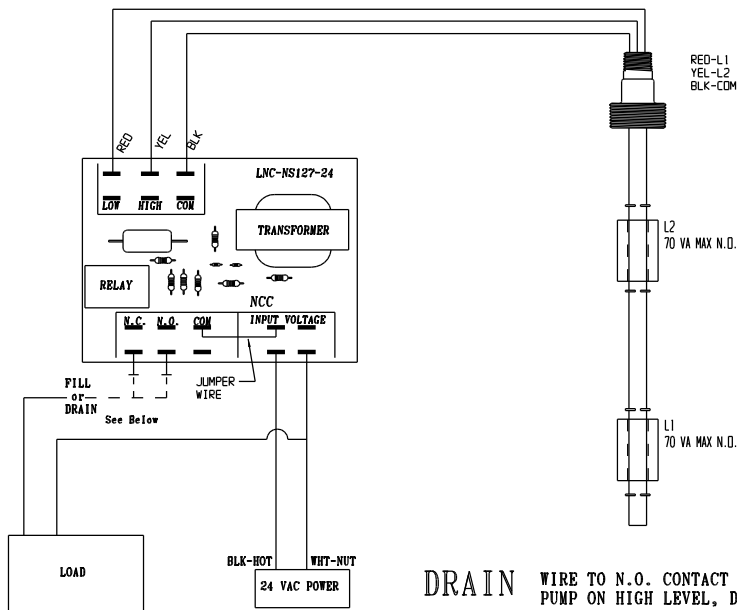
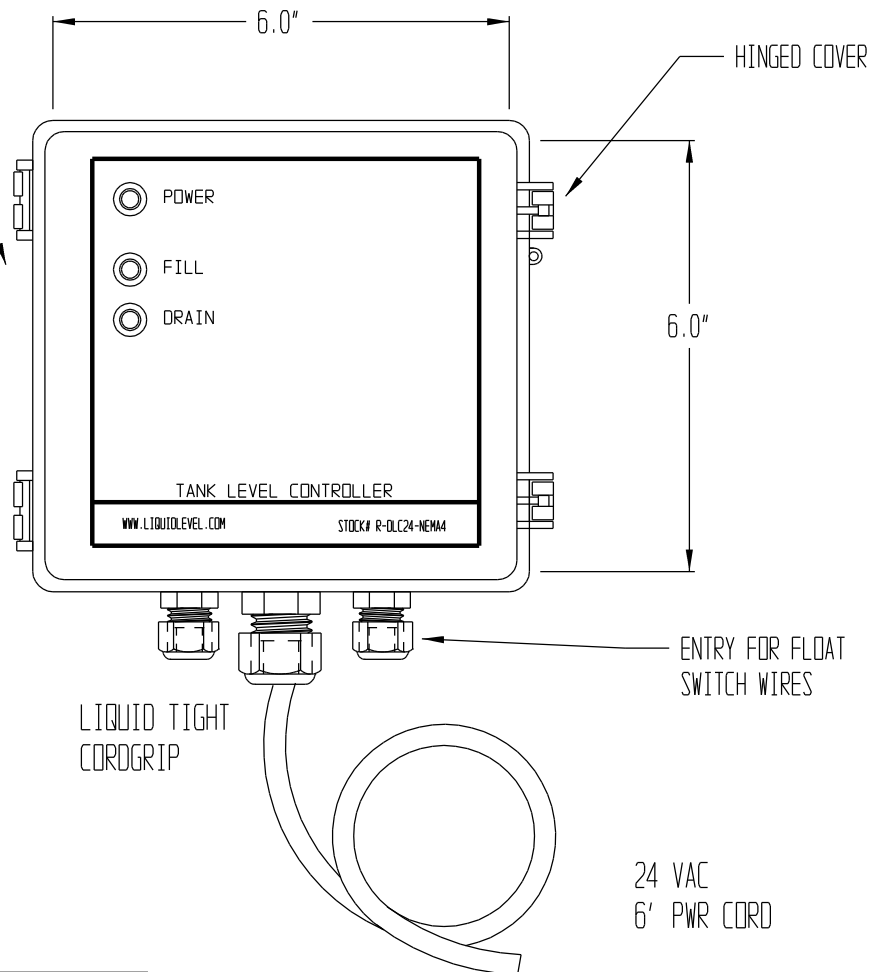


ABS PLASTIC ENCLOSURE  
NEMA4X, IP66, WITH STAINLESS  
STEEL WALL MOUNTING  
BRACKETS & HARDWARE



**DRAIN** WIRE TO N.O. CONTACT ON CIRCUIT BOARD:  
PUMP ON HIGH LEVEL, DRAIN TANK

**FILL** WIRE TO N.C. CONTACT ON CIRCUIT BOARD:  
PUMP ON LOW LEVEL, FILL TANK

PLEASE NOTE:

THIS DRAWING AND SPECIFICATION IS THE PROPERTY  
OF INNOVATIVE COMPONENTS AND IS TO BE USED  
SOLEY AS A TECHNICAL REFERENCE BY INNOVATIVE  
COMPONENTS' CUSTOMERS. ANY REPRODUCTION OR  
DISTRIBUTION TO THE CONTRARY IS PROHIBITED.

SIGNATURE OF APPROVAL	DATE
PRINT:	
SIGN:	

	<b>INNOVATIVE COMPONENTS</b>	
	635 OLD TURNPIKE ROAD PLANTSVILLE, CT. 06479	

TITLE: <b>DUAL LEVEL CONTROL RELAY</b>		
MODEL: <b>R-DLC-24</b>	DRAWN BY: F.J.K	
STOCK: <b>R-DLC24-NEMA4</b>	DATE: 07/07/04	
	SHEET: 1 OF 1	
	SCALE: NONE	
FILENAME: C:\CK7\PRJ\J-BOX	REV:	

STANDARD  
TOLERANCES  
.000 = ± .010  
.00 = ± .050  
.0 = ± .100  
0 = ± .200  
ANGLES ± 5°  
TEMP 45°C