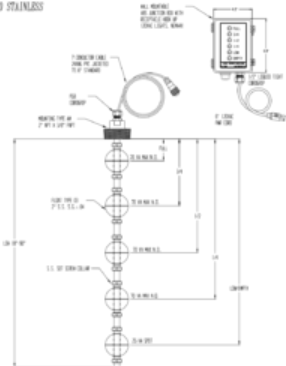


# SERIES 2000 STAINLESS



## PLEASE NOTE:

This device is not to be used in any application where the presence of oxygen is a concern. The device is not to be used in any application where the presence of oxygen is a concern. The device is not to be used in any application where the presence of oxygen is a concern. The device is not to be used in any application where the presence of oxygen is a concern.

QUANTITY OF APPROVAL \_\_\_\_\_ DATE \_\_\_\_\_



INNOVATIVE COMPONENTS

800 647 7464

PLACERVILLE, CA 95667

SERIES		STAINLESS STEEL LAB
PART NO.		LAB-2000-20
REV.	1	
DATE		
DESIGNED BY		
DRAWN BY		
APPROVED BY		