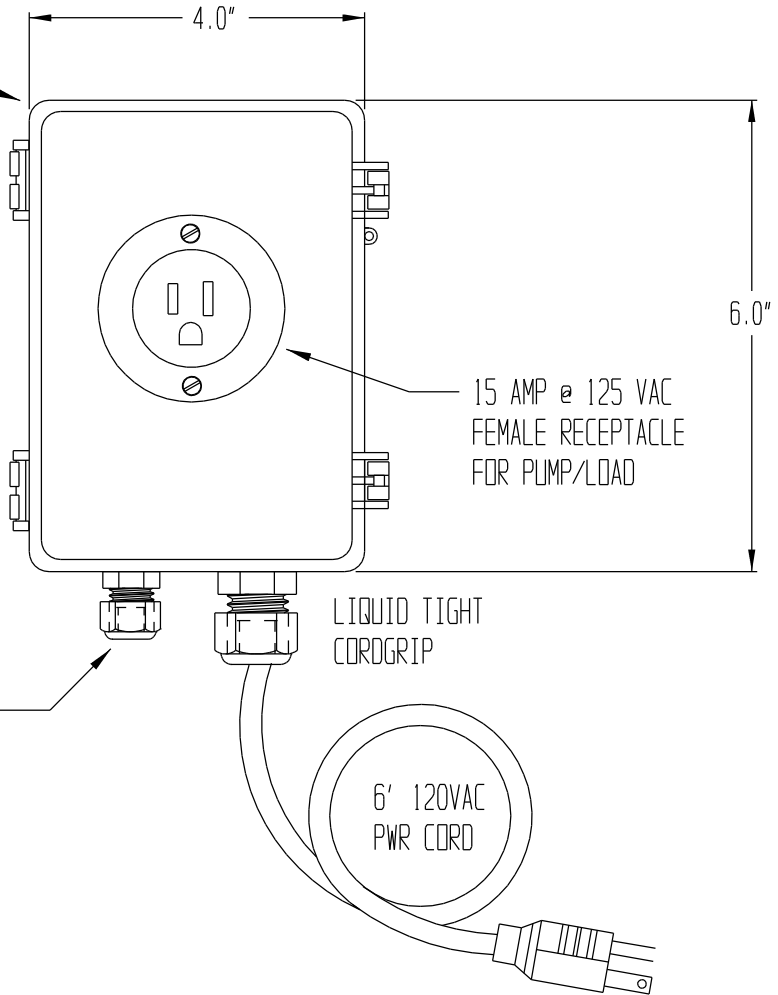


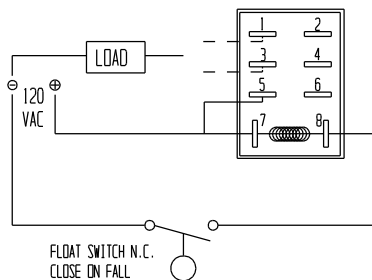
WALL MOUNTABLE
ABS JUNCTION BOX



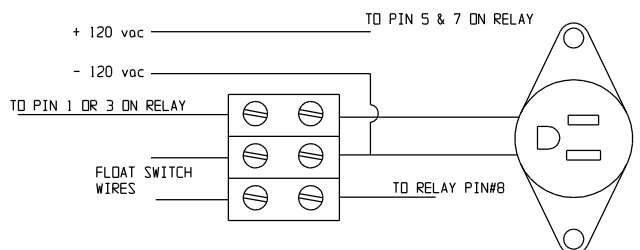
PUMP/LOAD ON WHEN FLOAT SWITCH CLOSES
*CONNECT LOAD TO PIN 3 OR 4

PUMP/LOAD OFF WHEN FLOAT SWITCH CLOSES
*CONNECT LOAD TO PIN 1 OR 2

WHEN FLOAT SWITCH CLOSES
RELAY WILL ENERGIZE:
PINS 3&4 WILL CLOSE
PINS 1&2 WILL OPEN



PIN OUT:
PIN-7&8-COIL
PIN-5&6-COMMON
PIN-3&4-NORMALLY OPEN
PIN-1&2-NORMALLY CLOSED



PLEASE NOTE:

THIS DRAWING AND SPECIFICATION IS THE PROPERTY OF INNOVATIVE COMPONENTS AND IS TO BE USED SOLELY AS A TECHNICAL REFERENCE BY INNOVATIVE COMPONENTS' CUSTOMERS. ANY REPRODUCTION OR DISTRIBUTION WITHOUT WRITTEN PERMISSION IS PROHIBITED.

SIGNATURE OF APPROVAL	DATE
PRINT:	
SIGN:	

INNOVATIVE COMPONENTS
384 OLD TURNPIKE ROAD, P.O. BOX 294
SOUTHINGTON, CT. 06489

STANDARD TOLERANCES .000 = ± .010 .00 = ± .050 .0 = ± .100 0 = ± .200 ANGLES ± 5° TEMP 45°C	TITLE: PVC BOX WITH RECEPTACLE HOOK-UP	
	MODEL: PIB-100	DRAWN BY: F.J.K
	STOCK: X	DATE: 02/23/04
	FILENAME: C:\CK7\PRTP\PIB-100	SHEET: 1 OF 1 SCALE: NONE
		REV: